

Enhancing Ancient Egyptian Identity Through the application of Environmental Interior Design Standards in Floating Hotels in Luxor: A Case Study of “Le Soleil Nile Cruise”

Prof. Sadeka Shakour,

Professor of Interior design & furniture department, Faculty of Applied Arts, Helwan University, Egypt 9
sadekashakour@gmail.com, sabdulshakour@msa.edu.eg

Professor of Interior design department, College of Art and Design, MSA, Egypt

Nourhan Yasser

Teaching Assistant at Environmental Interior Design Program, Helwan National University, Egypt,
nourhan.yassser99@gmail.com

Abstract

Luxor, a city rich in Egyptian history and culture, is a major tourism hub, yet many Nile cruises fail to reflect its heritage. These floating hotels should provide immersive cultural experiences but often lack a strong connection to the city's identity. Additionally, integrating environmental interior design standards remains a challenge, with many establishments lacking sustainable practices, leading to inefficient resource use and reduced guest comfort. This research explores sustainable interior design for Luxor's floating hotels, enhancing both ecological responsibility and the overall guest experience. A key case study is Le Soleil Nile Cruise, redesigned by the researcher with the team of Khalifa Architects Company, incorporating local materials, cultural aesthetics, and traditional craftsmanship elements. Building on this, the study proposes environmental tourism regulations and smart technology integration as a framework for future Nile cruise designs, ensuring sustainability, functionality, and an authentic Egyptian identity while embracing innovation for a more immersive and responsible hospitality experience.

Keywords

Luxor, Floating hotel, sustainable design, Smart design, Environmental interior design

Paper received March 03 , 2025 , Accepted April 24, 2025, Published on line July 1, 2025

Introduction:

Luxor, one of Egypt's most historically and culturally significant cities, is a leading destination for heritage tourism. The city's economy relies heavily on its hospitality sector, particularly Nile cruises, which provide visitors with a unique way to experience ancient sites while traveling along the river. These floating hotels play a crucial role in shaping tourists' perceptions of Egypt's cultural and environmental landscape. However, despite the growing global emphasis on sustainable interior design, many Nile cruise interiors in Luxor fail to incorporate environmentally responsible practices. Additionally, their designs often lack a strong connection to Egyptian heritage, resulting in spaces that do not reflect the authenticity of the region. According to a Statista survey analyzing cruise tourism bookings in 2023, Egyptians ranked second globally in the percentage of people who had booked a cruise within the past twelve months, making Egypt the only non-European or North American country in the ranking (Egypt Independent, 2023).

Problem statement:

- 1- The lack of environmental regulations for interior design in floating hotels in Luxor.
- 2- Nile cruise interiors fail to align with guest expectations for an authentic full cultural experience.
- 3- Nile cruise interiors are mostly simple and contemporary, missing cultural authenticity

Research Objective:

Propose a set of environmental interior design regulations to guide the development of future Nile cruise interiors ensuring sustainability while preserving Egyptian cultural identity

Research Significance:

This study contributes to sustainable tourism by providing practical design regulations that enhance environmental efficiency and cultural authenticity in Nile cruise interiors. It's a framework for responsible and heritage-driven interior design solutions

Research Methods: Case study:

A qualitative case study approach is employed, focusing on the interior design of a Nile cruise ship

CITATION

Sadeka Shakour, Nourhan Yasser (2025), Enhancing Ancient Egyptian Identity Through the application of Environmental Interior Design Standards in Floating Hotels in Luxor: A Case Study of “Le Soleil Nile Cruise”, International Design Journal, Vol. 15 No. 4, (July 2025) pp 247-363

“Le Soleil Nile Cruise” redesigned by Khalifa Architects. The researcher was directly involved in the design process, contributing to the development and application of environmental design strategies

Luxor Heritage in Egypt:

Luxor, often described as the "world's greatest open-air museum," has seen a significant revival in tourism. In the first quarter of 2023, tourism in Luxor and Aswan grew by 22% compared to the same period in the previous year. Recognizing its cultural importance, The Times listed Luxor among the world's best destinations to visit in 2025 (Ahram Online, 2023).



Figure 1, Valley of the Kings (Alvoyage.com)


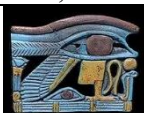


The ruins of the early Temples of Karnak and Luxor stand within the modern city on the East Bank and life goes on unchanged for centuries amongst the local inhabitants. Luxor City lies between the East and West bank of the River Nile and is crossed daily by locals and tourists alike with Felucca boats and Ferries alike. Many monuments, tombs, and temples are located on the West Bank which includes the Valley of the Kings and Valley of the Queens attracting millions of tourists worldwide arriving annually to partake in this famous pilgrimage in Egyptian ancient civilization.



Figure 2, Valley of the Kings (Viator.com)

Symbols & Motifs:

Table 1, Ancient Egyptian Symbols

Symbol	Meaning
 <p>Figure 3, The Ankh</p>	The ankh is a very significant symbol in ancient Egypt. Its hieroglyphs, translated to English as "the key of life," literally mean eternal life (Wilkinson, 2003).
 <p>Figure 4, The Eye of Ra</p>	The Eye of Ra is the most famous ancient Egyptian symbol, and it was used as an amulet to protect from evil spirits, disease, harmful animals, and envy. (Wilkinson, 2003).
 <p>Figure 5, The Lotus</p>	The Lotus Flower represents renewal by representing new beginnings, such as birth from death and the next reincarnation. (Wilkinson, 2003).
 <p>Figure 6, Sobek</p>	According to archaeologists, it looks like worshipers of the croc deity “Sobek” bred the Nile’s most famous reptile for mummification.. (Dunand & Lichtenberg, 2006).

Note. Images retrieved from Ancient Egyptian Symbols (Pyramids Land, n.d.), Crocodiles in Ancient Egypt (Schoen, 2018), and The Global Egyptian Museum (n.d.).

Color Theory in Egypt:

The ancient Egyptians had a great appreciation for life which is clearly depicted through their art. Images of people enjoying themselves - whether in this life or the next - are as plentiful as those most often seen of the gods or funerary rituals. The early Egyptologists who first encountered the culture focused their attention on the many examples of funerary art found in tombs and concluded that

Egyptian culture was death-obsessed when, in reality, the ancient Egyptians were wholly absorbed in living life to its fullest. They used Red which was associated with both fire and blood, Black and green are often used interchangeably in Egyptian art, in fact, as symbols of life. Statues of the gods were frequently carved from black tone but, just as often, from green. (Mark, 2017).



Figure 7, Goddess of Isis (Encyclopedia,: The Yorck Project , 2012)

Nile Tourism in Luxor:

Nile tourism offers a variety of experiences, from fast felucca trips to luxurious cruises, allowing visitors to enjoy the river's beauty. As a top Egyptian attraction, cruise operators compete to provide exceptional services, making a Nile cruise a dream experience for many travelers.

Both Arab and European tourists appreciate these

trips, which often feature Egyptian folk arts. With over 230 cruise ships recorded in 2024 recorded by Egypt State Information, the classic Luxor-Aswan route remains popular. Nile cruises offer a rich cultural experience by featuring Nubian traditions, including folklore, authentic dances, and regional cuisine, allowing guests to immerse themselves in local heritage.

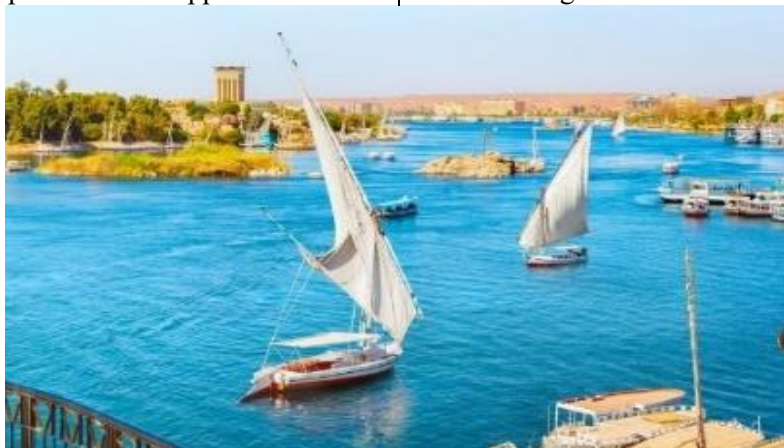


Figure 8, Nile Tourism (Travel2egypt, 2024)

Egypt Cruises Types of ships

Nile cruises feature three main ship types: motorships, dahabiyas, and feluccas. Motorships are modern floating hotels, while dahabiyas and feluccas offer traditional sailing experiences. Smaller engine-powered vessels also exist as intermediates.

- 1- Motorship Nile Cruises (Floating Hotels) – These large vessels (about 70m long) have 3–5 decks and luxury amenities, including pools, sun decks, restaurants, bars, and ensuite cabins, offering a hotel-like experience.
- 2- Dahabiya Nile Cruises – Traditional, sail-powered vessels (50m long) with a flat hull, popular among travelers seeking a historical,

immersive experience. They provide a quieter, more flexible route with the ability to anchor almost anywhere.

- 3- Feluccas– Smaller, single-sail boats accommodating 6–8 passengers, ideal for short excursions without overnight stays. They offer a close-to-nature experience, perfect for exploring islands and Nubian villages.

Nile floating Hotels classes

The Majority of the Nile Cruises are 5 Stars right now in Egypt. Most of the Old 2, 3 & 4 Stars are in renovation phase to be 5 Stars

Steigenberger Regency Nile Cruise (5 stars):

Every Saturday from Luxor for 07 & 04 Nights -
Every Wednesday from Aswan for 03 Nights.



Figure 9, (hotels-luxor-egypt.com)



Figure 10, (hotels-luxor-egypt.com)



Figure 11, (hotels-luxor-egypt.com)

Cultural experience in economic growth

(Tourists increasingly seek immersive cultural experiences, driving demand for heritage tours, culinary experiences, and artisanal workshops. Egypt, with its rich history and vibrant traditions, is enhancing cultural tourism through revived festivals and preserved heritage. This not only differentiates hotels and resorts but also boosts economic growth. As of January 2025, 156 tourism investment opportunities have been listed, with plans to expand Nile tourism by increasing floating hotel capacity to 25,000 rooms by 2030) (Egypt Today, 2025).

Environmental interior design

it creates aesthetically pleasing, eco-friendly spaces that minimize environmental impact. As climate concerns rise, sustainable design is essential for a healthier planet and lifestyle.

Core Principles:

- 1- Resource Efficiency – Uses renewable, recycled, or responsibly sourced materials like bamboo.
- 2- Energy Conservation – Incorporates LED lighting, solar panels, and natural ventilation to

reduce energy use.

- 3- Health & Well-being – Prioritizes non-toxic materials and low-VOC finishes for better indoor air quality.

Case study: Le Soleil Nile Cruise “The Nile’s Newest Jewel.”

The 5 stars Le Soleil Nile cruise project, which the researcher worked on as part of the design team at Khalifa Architects, in collaboration with Vanessa Victor Design House and the execution company Sole Fine Works, started renovation in 2023 and finished in 2024, serves as an innovative proposal for applying environmental interior design standards in floating Nile Hotels. The interior design draws inspiration from Ancient Egyptian aesthetics, and local materials, ensuring a culturally full guest experience while maintaining environmental responsibility.

The cruise features

It has 5 decks. Located just a 10-minute walk from Obelisk, the 5-star Soleil Nile Cruise - Every Monday from Luxor for 4 & 7 Nights, and Every Friday from Aswan for 3 & 7 Nights.

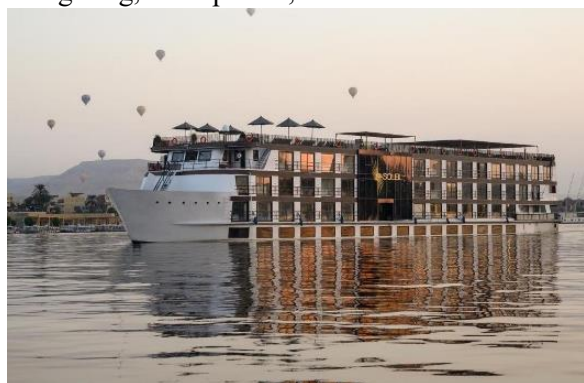


Figure 12, Soleil Cruise Elevation. (Khalifa Architects, 2024)



Figure 13, Le Soleil Nile Cruise (soleil-cruise.com)

Ship zoning:**1-Reception**

Before renovation.



Figures 14& 15, Soleil Nile Cruise Reception. (Before Renovation) (Khalifa Architects, 2023)

After renovation:

Reception itself feels like a seamless fusion of contemporary luxury and historical reverence. The textured feature wall, bathed in warm natural light, creates a sense of depth and movement, subtly echoing traditional Egyptian patterns. Above, the ceiling's is finished with hieroglyphic paper. The polished natural stone flooring reflects the sunlight, adding warmth and an earthy richness to the space. The furniture is arranged for comfort and

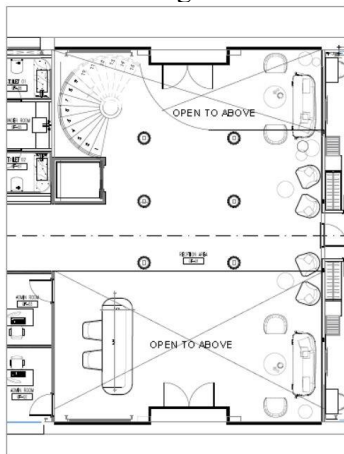


Figure 17, Soleil Nile Cruise Reception plan (After renovation) (Khalifa Architects, 2023)

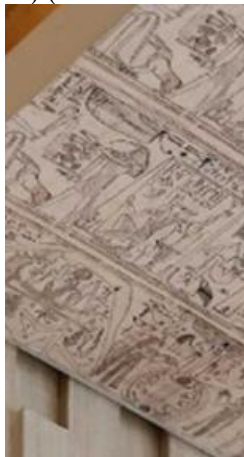


Figure 19, Soleil Nile Cruise Reception. Ceiling (After renovation) (Soleil Nile Cruise, 2024)

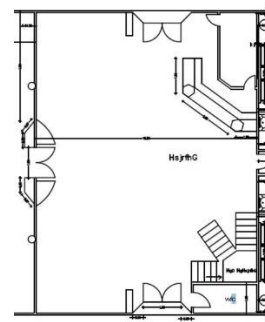


Figure 16, (Soleil Nile Cruise Reception plan. (Before renovation) (Khalifa Architects, 2023)

conversation, with plush seating in neutral tones that complement the organic textures throughout. Potted palms introduce a biophilic element, reinforcing the connection to the lush landscapes along the Nile. But the most striking feature remains the Sobek sculpture (Figure 18), its bold green form standing as a powerful nod to ancient mythology, reminding visitors of the river's spiritual and historical significance.



Figure 18, Soleil Nile Cruise Reception. (After renovation)



Figure 20, Soleil Nile Cruise Reception. (After renovation)

2- Lobby bar:

This Nile cruise lounge is a refined blend of Egyptian-inspired design and modern elegance, creating a warm and inviting atmosphere. The space is defined by natural materials, rich textures, and carefully curated details that pay homage to both heritage and contemporary aesthetics.

The woven rattan wall covering adds depth and warmth, evoking traditional Egyptian craftsmanship while maintaining a minimalist and sophisticated look. The seating, with its curved wooden frames, caned panels, and deep blue upholstery, feels both timeless and modern, recalling the grandeur of

classic Egyptian design with a fresh perspective. The color palette of deep blue, beige, and warm wood tones is reminiscent of the Nile itself, reinforcing the connection to the river.

A standout detail is the column featuring blue ceramic spheres encircling its base, possibly referencing ancient Egyptian jewelry or amulets associated with protection and divine power. This subtle yet striking element adds a sense of cultural richness to the otherwise contemporary setting. Also there were lighting units inspired by Egyptian lotus. (Figure 22)

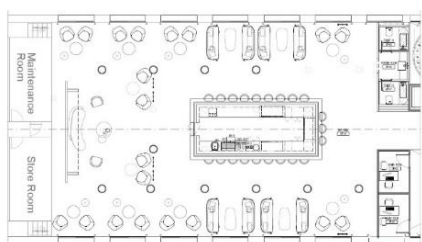


Figure 21, Soleil Nile Cruise Lobby bar plan (After renovation) (Khalifa Architects,2023)



Figure 22, Soleil Nile Cruise Lobby bar. (After renovation) (Soleil Cruise,2024)

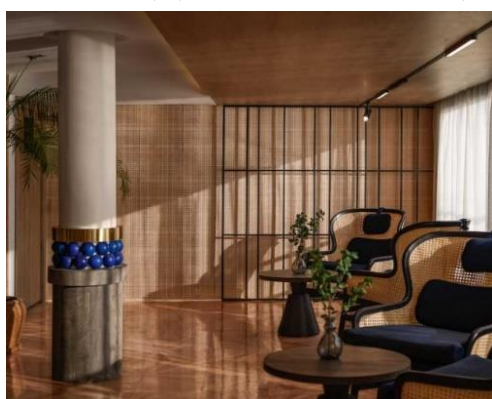


Figure 23, Soleil Nile Cruise lobby bar (After renovation) (Soleil Nile Cruise,2024)



Figure 24, Soleil Nile Cruise lobby bar (After renovation) (Soleil Nile Cruise,2024)

3-Restaurant

Before renovation



Figure 25, Soleil Nile Cruise Restaurant. (Before Renovation) (Khalifa Architects,2023)

After renovation:

This Nile cruise restaurant embodies a harmonious blend of traditional Egyptian aesthetics and modern elegance. The space is warm and inviting, with earthy tones, natural materials, and soft lighting that create a sophisticated yet comfortable atmosphere. The architectural elements, particularly the columns, have a distinctive design reminiscent of ancient Egyptian papyrus, adding a subtle cultural reference without overwhelming the space. The

ceiling is relatively low, but the warm, diffused lighting enhances the sense of intimacy, making the dining area feel cozy rather than confined.

The furniture is crafted from rich wood, with rounded tables and cushioned chairs featuring woven textures that contribute to an organic and biophilic ambiance. The layout is thoughtfully arranged to accommodate both intimate dinners and group gatherings, ensuring flexibility in the dining experience.

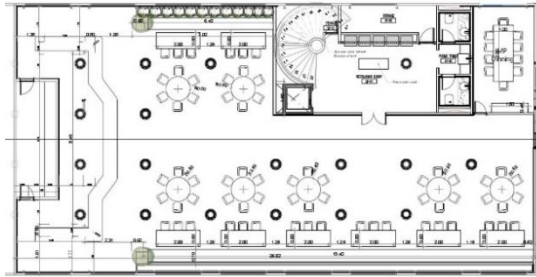


Figure 26, Soleil Nile Cruise Restaurant plan (After renovation) (Khalifa Architects 2023)



Figure 28, Soleil Nile Cruise Restaurant (After renovation) (Khalifa Architects, 2023)



Figure 27, Soleil Nile Cruise Restaurant (After renovation) (Khalifa Architects 2023)

4- Spa:

The 3D lotus relief on the walls is a refined tribute to Egypt's cultural heritage, symbolizing rebirth and spiritual well-being, much like in ancient temples. Its subtle integration into the spa enhances the sense of tranquility while maintaining

authenticity. The material selection further reinforces this identity—carved stone for the relief, smooth neutral-toned plaster walls, and travertine flooring, reminiscent of historic Egyptian structures. Wooden furniture and woven textiles add warmth and artisanal craftsmanship

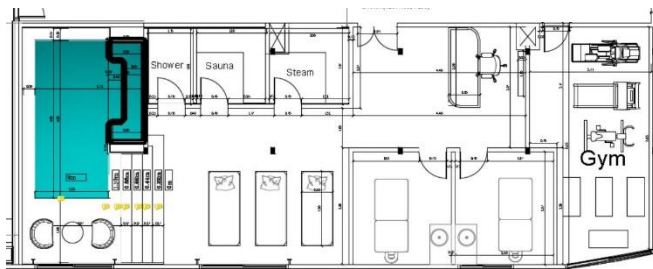


Figure 29, Soleil Nile Cruise Spa plan (After renovation) (Khalifa Architects, 2023)



Figure 30, Soleil Nile Cruise Spa (After renovation) (Khalifa Architects, 2023)

4- Rooms overview (Before & After renovation)

Before renovation:

The space predominantly features warm tones, with wood paneling and beige walls.

Dark wooden furniture and trim are combined with

a blue carpet, creating a contrast that feels dated. The bedroom has a simple, functional design with a wooden headboard, built-in nightstands, and a basic mattress setup. The arrangement appears practical but does not maximize comfort or luxury.



Figures 31,32 & 33, Soleil Nile Cruise Suites. (Before Renovation) (Khalifa Architects,2023)

After renovation:

Soleil now is Offering a flat-screen TV with satellite channels, the 53 rooms come with an air conditioner. Bathrooms have a spa bathtub and a separate toilet

- 41 Luxury room: 21 sqm
- 8 Junior Suites: 39sqm
- 2 Royal Suite: 44 sqm

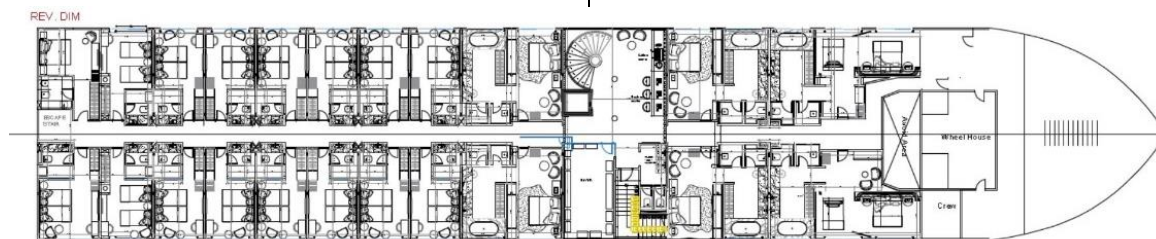


Figure 34, First floor plan (Khalifa Architects, 2023)

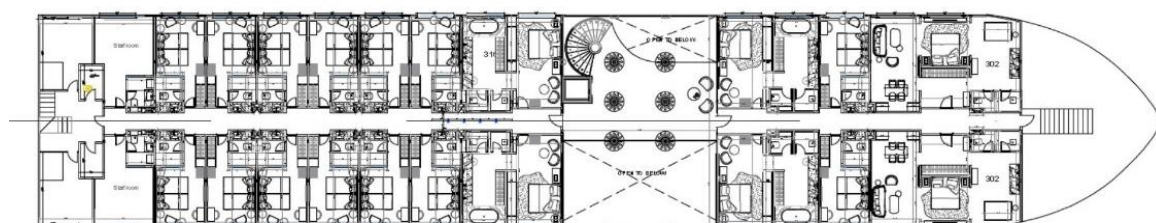


Figure 35, Second floor plan (Khalifa Architects, 2023)

1- Luxury room:

This Nile cruise cabin is a serene and elegant retreat, offering a seamless connection to the river through its large sliding glass doors. The interior is designed with a soft, neutral palette, accented by gentle greens that echo the lush landscape along the Nile. Natural light floods the space, enhancing the airy and tranquil ambiance.

The bed is the focal point of the room, dressed in crisp white linens with delicate green accents in the pillows and throw, reinforcing a fresh and calming aesthetic. The headboard combines wood and textured fabric, adding warmth and subtle detail. The wallpaper behind the bed features a stylized palm motif, subtly referencing Egyptian flora in a modern, understated way.

The seating area by the window includes a comfortable armchair and a small table, inviting guests to relax while enjoying the river views. The compact yet functional workspace integrates seamlessly into the room, with a sleek white desk, a round mirror, and minimalist decor. The presence of natural elements, such as wooden finishes and small plants, enhances the biophilic design approach, creating a harmonious balance between comfort and nature.

This cabin perfectly captures the essence of refined simplicity, blending contemporary luxury with subtle nods to Egyptian heritage. The thoughtful design maximizes both space and views, ensuring a relaxing and immersive experience as guests sail along the Nile.

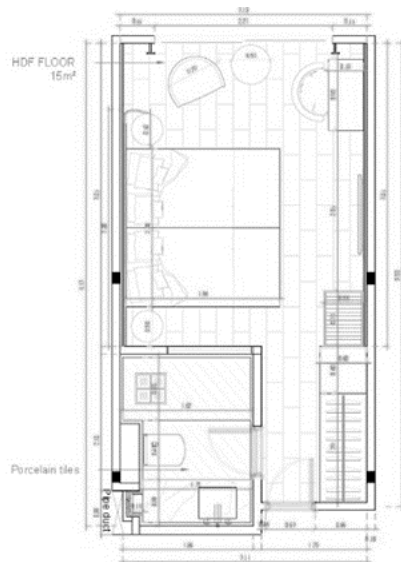


Figure 37, Soleil Nile Cruise Luxury suite plan. (After renovation) (Khalifa Architects,2023)



Figure 36, Soleil Nile Cruise Luxury suite (After renovation) (Soleil Nile Cruise,2024)

2-Junior Suite:

This Nile cruise cabin embodies a harmonious fusion of modern luxury and Egyptian heritage. The focal point of the room is the intricately textured headboard wall, featuring geometric patterns reminiscent of ancient Egyptian motifs, subtly referencing the artistry of pharaonic craftsmanship. The warm, earthy color palette, combined with soft ambient lighting, enhances the sense of comfort and tranquility.

Natural wood finishes dominate the space, from the built-in cabinetry to the paneling, reinforcing a connection to organic materials that echo traditional Egyptian interiors. The thoughtfully layered textiles, including the neutral-toned bed linens and woven accents, contribute to an inviting and sophisticated atmosphere.

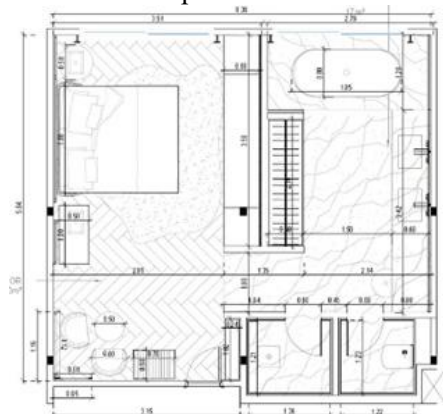


Figure 38, Soleil Nile Cruise Junior suite plan (After renovation) (Soleil Nile Cruise,2024)

A striking feature of the cabin is the large floor-to-ceiling window, which not only floods the space with natural light but also offers an uninterrupted view of the Nile's ever-changing scenery. This seamless integration of indoor and outdoor elements mirrors the historical relationship between Egyptian architecture and the surrounding natural landscape.

Functional yet elegant, the cabin also incorporates modern conveniences such as a built-in minibar and entertainment system, ensuring a comfortable stay without compromising on aesthetic appeal. Subtle decorative elements, such as carefully curated shelves and traditional-inspired accessories, reinforce the space's cultural depth while maintaining a contemporary edge.



Figure 39, Soleil Nile Cruise Junior suite (After renovation) (Soleil Nile Cruise,2024)



Figure 40, Soleil Nile Cruise Junior suite (After renovation) (Soleil Nile Cruise,2024)

3- Royal Suite:

The Royal Suite elegantly merges Egyptian heritage with modern luxury. The lounge features a striking papyrus-inspired artwork, warm wood paneling, and gold accents, evoking ancient grandeur. A sculptural green pedestal table subtly nods to sacred Egyptian symbols. The bedroom

exudes serene opulence, with a neutral palette, textured materials, and a refined painting reminiscent of ancient Egyptian art. Thoughtfully curated furnishings and panoramic Nile views create a regal yet contemporary retreat, where history and comfort blend seamlessly.

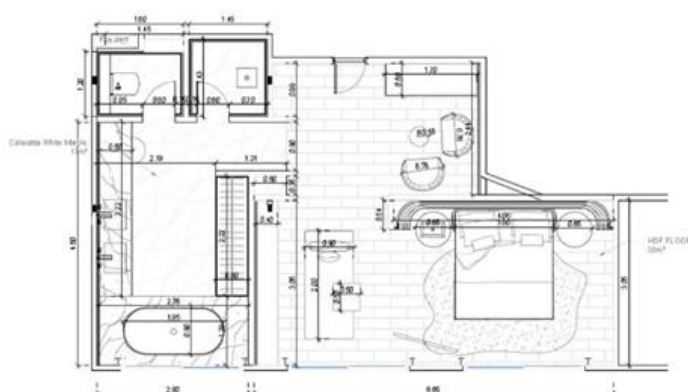


Figure 42, Soleil Nile Cruise Royal suite. (After renovation) ((Soleil Cruise,2024)

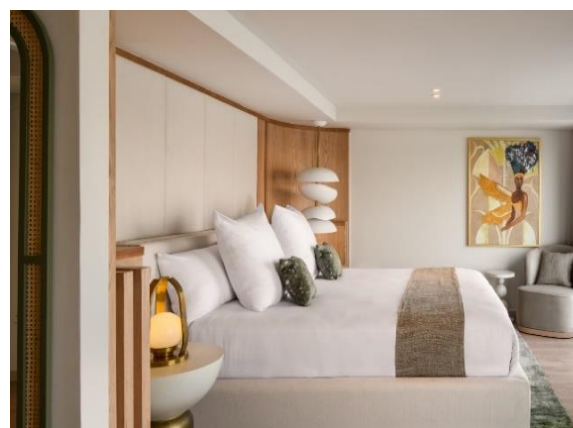


Figure 43, Soleil Nile Cruise Royal suite. (After renovation) ((Soleil Cruise,2024)



Figure 44, Soleil Nile Cruise Royal suite bathroom (After renovation) ((Soleil Cruise,2024)



Figure 44, Soleil Nile Cruise Royal suite bathroom (After renovation) ((Soleil Cruise,2024)

4-Soleil Suite

The suite embodies Egyptian elegance with nature-inspired motifs and refined craftsmanship. The wardrobe panels feature delicate hand-painted papyrus and lotus patterns, reminiscent of ancient

murals. The bedroom blends soft textures, warm wood, and golden accents, evoking a serene yet regal ambiance. Thoughtfully designed, the space harmonizes heritage with contemporary luxury, offering a tranquil Nile retreat.

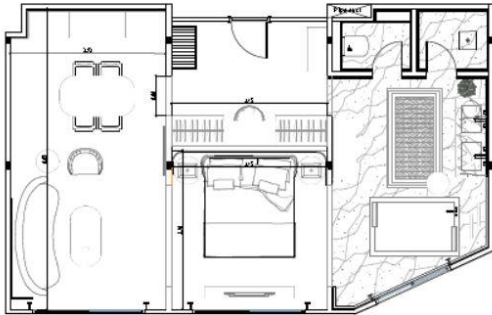


Figure 45, Soleil Nile Cruise Soleil suite plan. (After renovation) (Khalifa Architects,2023)



Figure 46, Soleil Nile Cruise Soleil suite. (After renovation) (Soleil Cruise,2024)



Figures 47,48 & 49, Soleil Nile Cruise Soleil suite. (After renovation) Soleil Cruise,2024)

Recommendations & Conclusion

Environmental Tourism guidelines for Nile floating hotels ((Aligned with Egypt Vision 2030).

1. Architectural & Spatial Design Regulations

Element	Regulation	Cultural Significance
Spatial Layout	Open terraces in high standard suites And contemporary columns inspired by ancient identity.	Create an immersive Nile experience.
Ceiling Design	Ceilings of lobby must incorporate Egyptian motifs	Pays homage to ancient Egyptian temples and craftsmanship.
Wall Treatments	Walls must use textured surfaces with carved details, murals, and papyrus-inspired wallpapers to reinforce Egyptian identity.	Creates storytelling elements that narrate Egyptian history.
Color Palette	Nile cruises must adhere to a warm neutral, earthy, deep blue, and gold-accented palette in interiors.	Evokes the colors of ancient Egyptian art, desert landscapes, and the Nile.
Flooring	Flooring must incorporate limestone, marble, and locally crafted tiles for durability and authenticity.	Resembles the floors of historic temples and palaces.

2. Furniture & Decorative Elements Regulations

Element	Regulation	Cultural Significance
Seating & Sofas	All seating must be handcrafted with wooden frames, and plush upholstery in natural fabrics.	Inspired by Pharaonic thrones and traditional Egyptian comfort.
Tables & Consoles	Tables must be made from local materials	Reflects Egyptian craftsmanship and artistic detailing.
Beds & Headboards	Headboards must feature lotus flower, papyrus, or hieroglyphic-inspired carvings in guest suites. wallpapers to reinforce Egyptian identity.	Symbolizes renewal and Egyptian mythology.
Lighting Fixtures	Alabaster table lamps must be incorporated	Inspired by historical Egyptian lighting elements.
Textiles & Fabrics	Upholstery and textiles must be handwoven Egyptian cotton, linen, or embroidered fabrics in Egypt motifs.	Supports local artisans and preserves traditional weaving.

3. Sustainability & Environmental Regulations

Sustainable Approach	Regulation	Cultural Significance
Energy Efficiency	Nile cruises must install solar-powered lighting and energy-efficient appliances.	Inspired by Egypt’s push for renewable energy solutions.
Water Conservation	Ships must implement greywater recycling systems and water-saving fixtures.	Aligns with Egypt Vision 2030’s sustainability goals.
Material Selection	Construction and renovations must use locally sourced stone, sustainable wood, and low-VOC paints. No use of heavy materials depending on ship durability - Marble thickness to be 1 cm - Vinyl or LVT (Luxury Vinyl Tile in sun decks flooring) – Mimics wood or stone but is much lighter and water-resistant. -Aluminum– Used for framing and decorative trims instead of heavier metals like steel.	Supports Egyptian industries and promotes authenticity.
Waste Management	All ships must implement zero-waste policies, composting, and recycling initiatives.	Encourages responsible tourism while reducing environmental impact.
Biophilic Integration	Nile cruise interiors must include native plants such as papyrus and palm trees.	Reflects Nile River vegetation and ancient Egyptian gardens.



4. Cultural Immersion & Guest Experience Regulations

Experience Aspect	Regulation	Cultural Significance
Reception Areas	Palm Frond Centerpieces	Creates a grand entrance inspired by temple architecture.
Dining Spaces	Restaurants must incorporate handmade Egyptian pottery, wooden furniture, and warm lighting. Folklore Egyptian music Offer traditional dishes	Enhances the experience of traditional Egyptian hospitality.
Lounge & Bar Areas	Lounge spaces must integrate contemporary seating, vibrant textiles. Staff dressed in traditional Egyptian attire can enhance the experience.	Evokes traditional leisure spaces along the Nile River.
Suites & Cabins	Rooms must include Egyptian-themed murals, artisanal furniture, and locally crafted décor. Each suite must include at least one arm chair Smart design including Free wifi, remote control curtains, Tv screen And Lighting sensor	Encourages responsible tourism while reducing environmental impact.
Sun Decks	Wooden pergolas that can be folded Railing must be simple and inspired by Egyptian identity	Reflects historical riverfront architecture.

By implementing these standardized regulations, Nile cruises in Luxor will:

- Reinforce Egyptian cultural identity in tourism
- Support local artisans and craftsmanship
- Promote sustainability and environmental responsibility

Align with Egypt Vision 2030 for heritage-driven, eco-friendly tourism

These mandatory standards ensure that floating hotels on the Nile remain historically authentic, environmentally sustainable, and internationally competitive while offering guests a truly Egyptian experience.

References:

- 1- Joseph Iskander - Attorney-at-law.(2025). Sustainable Tourism in Egypt: Environmental Law's Role. Andersen Egypt. Retrieved from <https://eg.andersen.com/sustainable-tourism-in-egypt/>
- 2- Egipto Exclusivo. (n.d.). Egypt cruises: Types of Ships Used. Retrieved from <https://www.egiptoexclusivo.com/en/nile-cruises>
- 3- State Information Service. (n.d.). Nile tourism. Egypt. Retrieved from

<https://beta.sis.gov.eg/en/egypt/tourism/recreational-tourism/nile-tourism/>

- 4- Memphis Tours. (n.d.). Luxor City Egypt (Attractions and Things to Do). Retrieved from <https://www.memphistours.co.uk/Egypt/Egypt-Travel-Guide/Egypt-Nile-Valley/wiki/Luxor-City-Egypt>
- 5- Soleil Nile Cruise. (n.d.). Luxury Nile Cruise Experience. Retrieved from <https://www.soleil-cruise.com/>
- 6- Ahram Online. (2023, April 18). Luxor and Aswan's tourism increased by 22% in Q1 of 2023: Official. Retrieved from <https://english.ahram.org.eg/News/496045.asp>
- 7- Mark, J. J. (2017). Color in Ancient Egypt. World History Encyclopedia. Retrieved March 23, 2025, from <https://www.worldhistory.org/article/999/color-in-ancient-egypt/>
- 8- Farees, A. (2021). 40 Most Important Ancient Egyptian Symbols. Pyramids Land Tours. Retrieved from <https://www.pyramidsland.com/blog/ancient-egyptian-symbols>